



Jan.2016 edition

International market products	Rated speed (m/s)	Rated capacity (kg)	The product described in this brochure
MS(CHOI-II)(J)SERIES) Small machineroom Machine roomless passenger elevator	1.0 1.6 1.75 2.0 2.5	400 450 630 800 900 1000 1150	
MS ( RICH ) Small machineroom high-end business passenger elevator	1.0 1.6 1.75 2.0 2.5	800 900 1000 1150 1275 1350 1600	
MS(CHOI- II ) Small machineroom passenger elevator	1.0 1.6 1.75 2.0 2.5	630 800 900 1000 1150	
NS (CHOI-MRL) Machine roomless passenger elevator	1.0 1.6 1.75 2.0	630 800 1000	
NS(RICH-MRL) Machine roomless high-end business passenger elevator	1.0 1.6 1.75 2.0	630 800 1000 1150 1275 1350 1600	
NS ( NS6100D ) Machine roomless passenger elevator ( Australian Standard )	1.0 1.6 1.75 2.0	630 800 1000 1150 1275 1350 1600	
NS 8600 Machine roomless passenger elevator	0.5 1.0 1.6	1800 2000 2700	
NVS ( RICH-MRLV ) Machine roomless panoramic passenger elevator	1.0 1.6 1.75	800 1000	
QVS ( RICH-V ) Small machineroom panoramic passenger elevator	1.0 1.6 1.75	630 800 1000	
FS Cargo elevator	0.5 1.0	2000 3000	
BS Hospital elevator	0.25 0.5	5000	
ZS Swing door villa lift	1.0 1.6 1.75 2.0 2.5		
ZS Auto door villa lift	0.25 0.4	320 400	
QS6100 High speed passenger elevator	0.25 0.4	320 400	
NAVI Super high speed passenger elevator	3.0-4.0	1000-1600	
NS(CHIO-II-MRLA) Machine roomless passenger elevator ( Russia Standard )	5.0 6.0 7.0 8.0	1350 1600 2000	
MS(CHOI-II A) Small machineroom passenger elevator ( Russia Standard )	1.0 1.6 1.75	400 630 800 1000	
RS9200 Service lift	1.0 1.6 1.75	400 630 800 1000	

**BLT NS(CHOI-MRL)**  
 TECHNOLOGY LEADS THE MARKET  
 SERVICES CREATE VALUE

## CONTACT US

### KAZAKHSTAN OVERSEAS BRANCH

E-mail:blt.kz@bltcn.cn  
 Tel:+86 24 25162893

### CENTRAL ASIA BRANCH

E-mail:blt.cis@bltcn.cn  
 Tel:+86 24 25162836

### AFRICAN BRANCH

E-mail:blt.africa@bltcn.cn  
 Tel:+86 24 25162875

### PAPUA NEW GUINEA BRANCH

E-mail:blt.oceania@bltcn.cn  
 Tel:+86 24 25162875

### AUSTRALIA OVERSEAS BRANCH

E-mail:blt.au@bltcn.cn  
 Tel:+86 24 25162863

### MOSCOW OVERSEAS BRANCH

E-mail:zapad.russia@bltcn.cn  
 Tel:+86 24 25162890

### RUSSIAN EASTERN BRANCH

E-mail:vostok.russia@bltcn.cn  
 Tel:+86 24 25162894

### EUROPEAN BRANCH

E-mail:blt.europe@bltcn.cn  
 Tel:+86 24 25162876

### SOUTH AFRICA BRANCH

E-mail:s.africa@bltcn.cn  
 Tel:+86 24 25162865

### KUWAIT BRANCH

E-mail:vostok.russia@bltcn.cn  
 Tel:+86 24 25162868

### MEXICO BRANCH

E-mail:blt.centralamerica@bltcn.cn  
 Tel:+86 24 25162769

### INDIA BRANCH

E-mail:blt.india@bltcn.cn  
 Tel:+86 24 25162850

### VIETNAM AND THAILAND BRANCH

E-mail:blt.yt@bltcn.cn  
 Tel:+86 24 25162850

### CHILE BRANCH

E-mail:blt.southamerica@bltcn.cn  
 Tel:+86 24 25162770

### COLUMBIA BRANCH

E-mail:blt.america@bltcn.cn  
 Tel:+86 24 25162767

### IRAN BRANCH

E-mail:blt.iran@bltcn.cn  
 Tel:+86 24 25162854

### UNITED ARAB EMIRATES BRANCH

E-mail:blt.jyu@bltcn.cn  
 Tel:+86 24 25162857

### SINGAPORE BRANCH

E-mail:blt.sg@bltcn.cn  
 Tel:+86 24 25162849

### MALAYSIA,INDONESIA AND PHILIPPINES BRANCH

E-mail:blt.asia@bltcn.cn  
 Tel:+86 24 25162858

### NORTH KOREAN BRANCH

E-mail:blt.korea@bltcn.cn  
 Tel:+86 24 25162859

### MONGOLIA OVERSEAS BRANCH

E-mail:blt\_mn@bltcn.cn  
 Tel:+976 99057821

### PERU OVERSEAS BRANCH

E-mail:blt.peru@bltcn.cn  
 Tel:+86 24 25162767

### BALTIC SEA BRANCH

E-mail:blt.baltic@bltcn.cn  
 Tel:+86 24 25162785

### SHENYANG BRILLIANT ELEVATOR CO.,LTD.

Add: No.27,Development Road,Shenyang Economic&Technology  
 Development Zone,China

P.C: 110027

Fax:+86 24 25162790 +86 24 25162844

http://www.bltelevator.com

SHENYANG YUANDA INTELLECTUAL INDUSTRY GROUP CO., LTD.

TECHNOLOGY LEADS THE MARKET  
SERVICES CREATE VALUE

## BRILLIANT ELEVATOR

- Chinese Pride
- Trust by the world

BLT is the self-owned brand ranking with global elevators and the pioneer leading Chinese elevators to the world, providing the world-renowned buildings with perfect service. It is committed to making the intelligent transportation of every building more secure, comfortable and convenient, and to keeping creating science and technology benchmark.

Yuanda Intellectual Industry Group has been adhering to Three Self developing strategy of self-owned brand, self-owned intellectual property and self-owned marketing network, relying on marketing network with perfect layout, having the whole world in view and comprehensively realizing the function of integration and radiation of global business and service network.

After years of effort, BLT has set up over 140 sales service outlets at home and abroad, 7 wholly-owned subsidiaries in Peru, Mongolia, Singapore, Russia, Australia, Morocco and Papua New Guinea and one holding subsidiary. It has set up factories in India and Kazakhstan. Its own worldwide marketing service network has been built completely, which can provide lifelong top-level professional, high-quality, fast and convenient service for global customers.

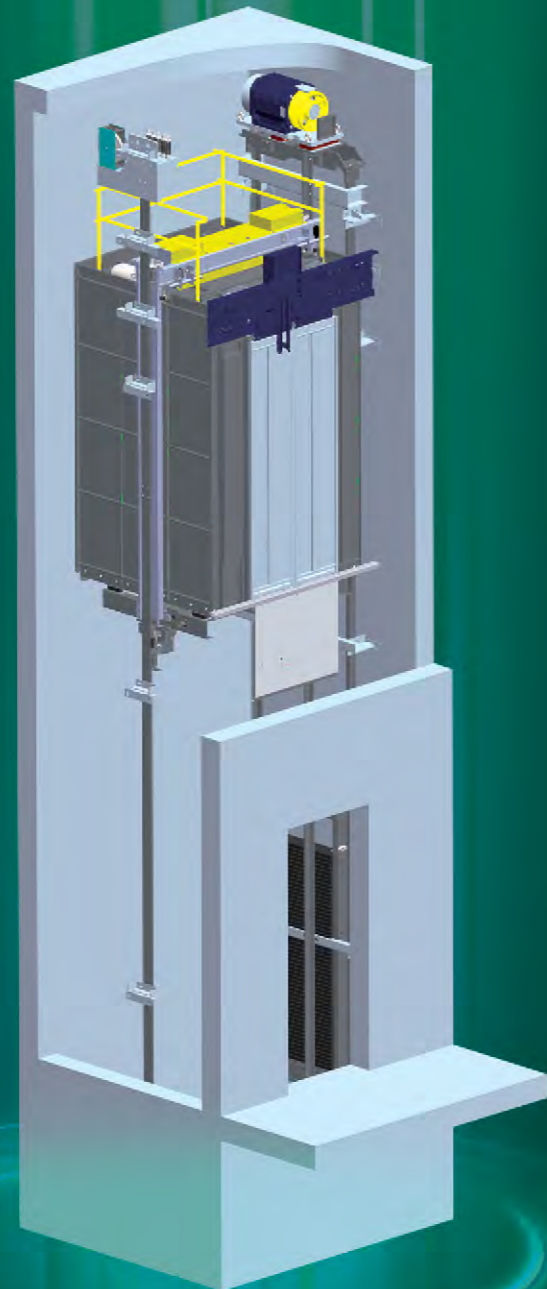
Stock Code: 002689.SZ

National Customer Satisfaction Enterprise

National Customer Satisfaction Service

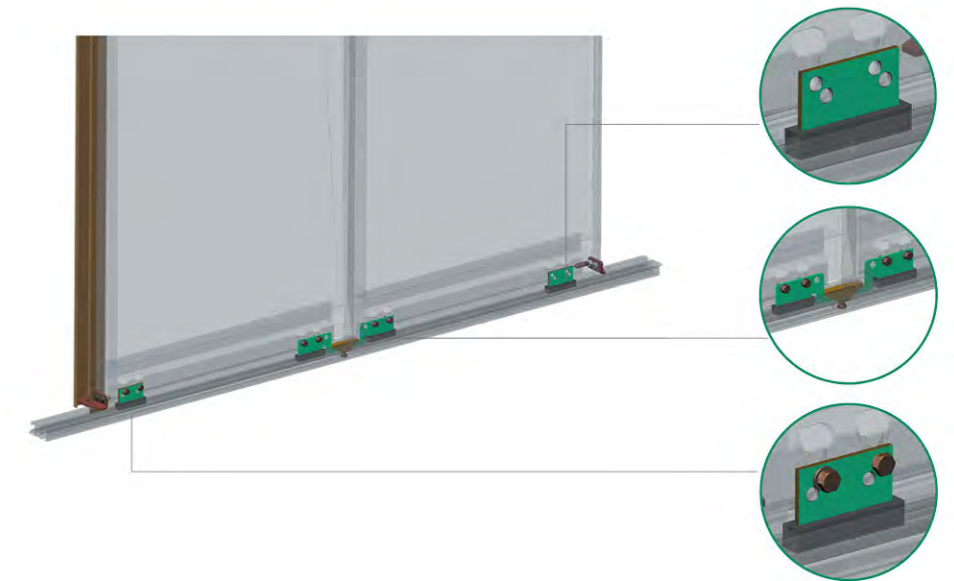


# CHOI-MRL



○The elevator landing door adopts unique anti-dropping design to solve the problems, such as door panel deformation and dropping caused by external shocks.

○The design has obtained China national patent: 201320169973.9

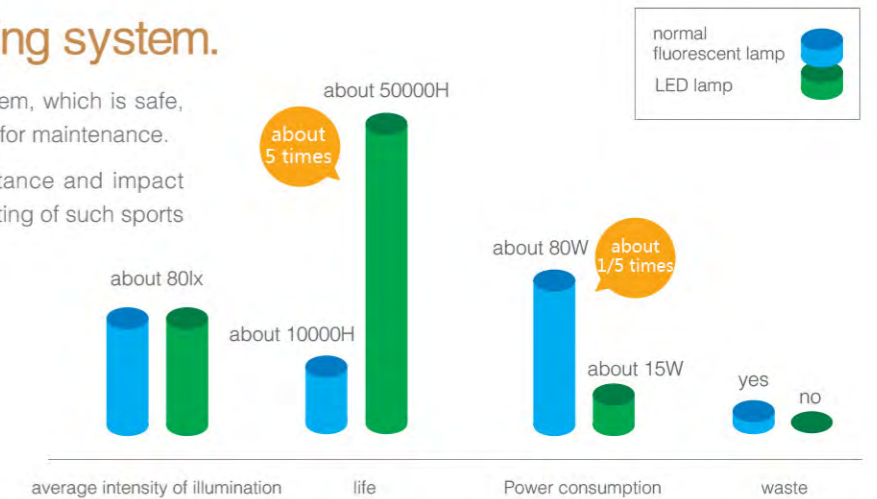


## Car internal LED lighting system.

○Car is equipped with LED lighting system, which is safe, highly efficient, energy-saving, and easy for maintenance.

○Having the features of vibration resistance and impact resistance, it is especially suitable for lighting of such sports products as elevators.

○Actual life can reach above 50000 H.



## Excellent door system

Light curtain door

○High sensibility, non-contact design

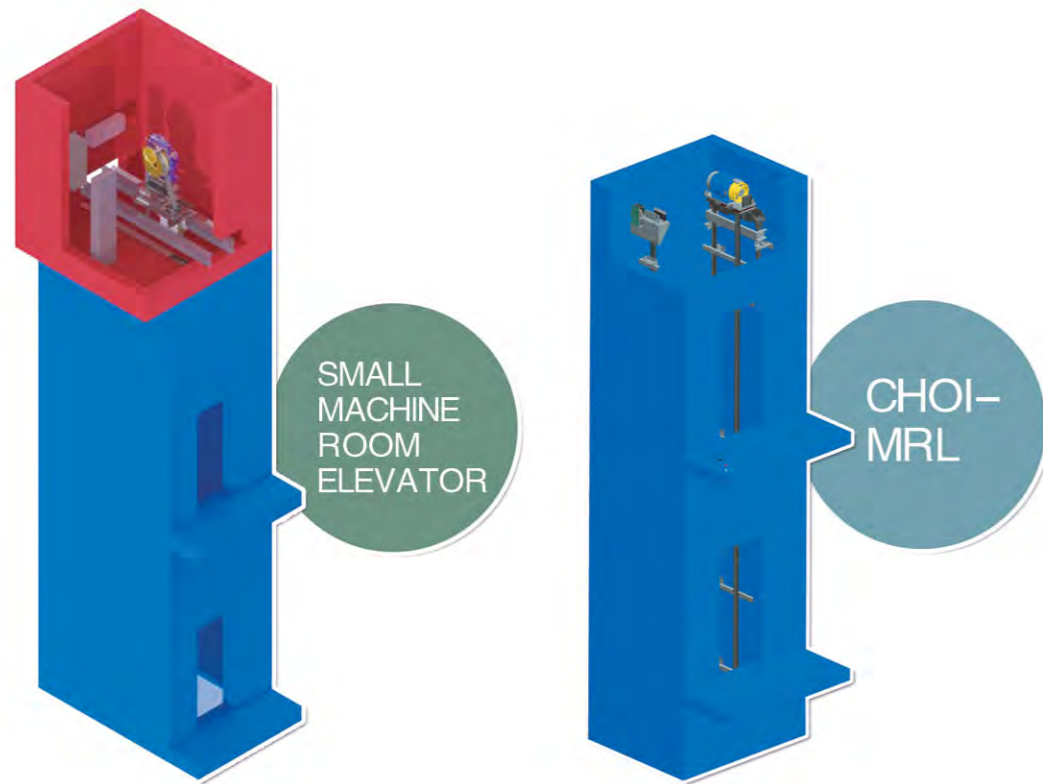
○Response time < 75ms, effectively ensure safe access of passengers.



○Door system adopts permanent magnet synchronous driving technology, and full closed loop control, extending service life of the elevator.

○More than 8 million times of opening and closing tests ensure the safety of the elevator door system, and stable and reliable operation.





## Machine-room-less elevator with innovative design

### Small and exquisite drive arrangement scheme

Machine-room-less elevator with innovative design

Save more space and expenses

Compared with small machine room elevator it can save one-floor space and omit a variety of decoration in machine room.

More convenient for installation

Host machine and electric equipments are directly installed in shaft without need of transporting another floor.

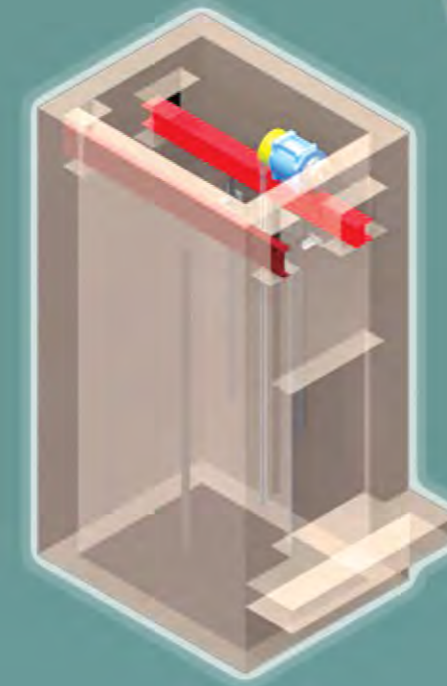
### Compact control cabinet

The self-developed and designed control cabinet especially for elevator adopts mature integrated circuit board technology, increasing anti-interference ability, decreasing the thickness of control cabinet and effectively raising utilization of shaft space. The characteristics of compactness, flexibility and portability make the control cabinet a perfect option for machine-room-less elevator.

### Green and environmental friendly traction system

Adoption of high efficiency and energy saving gearless permanent magnet synchronous traction technology ensures low noise, zero pollution and more comfortable ride. Compact appearance of traction machine perfectly caters for machine-room-less elevator shaft character.

VS



Traditional machine-room-less



CHOI-MRL

## Comparison of top terminal landing between traditional machine-room-less and CHOI-MRL

- No need of host machine beam reserved hole for top floor civil construction and attention of holes position and support reaction.
- Drive structure is installed on guide rail top, force being transmitted to pit ground.
- Structure is more compact, and top landing work space is bigger.
- Drive system mass is greatly lowered, so installation time is reduced by 30%, and installation is more convenient.

# Compact gearless permanent magnet synchronous direct drive traction machine

## ○ small and exquisite

Compared with traditional traction machine, adoption of compact gearless permanent magnet synchronous direct drive traction machine can reduce the volume by over 30%, providing bigger elastic space for building designers and improving building space utilization.

## ○ Energy conservation

Adoption of high performance cold-rolled non-oriented silicon steel sheet as stator conforms to standard IEC60317, greatly reducing energy loss. Rotor is composed of high quality permanent magnet and has no exciting current, greatly raising running efficiency of the machine and saving power by about 40%.

## ○ Environment protection

It is fit for machine-room-less elevators and has the features of low noise and long term maintenance-free, being more suitable for environment protection requirement.

## ○ Safety

Up run overspeed protection is realized by brake redundancy design and has passed TUV certification, having the protection function of prevention of elevator running when opening the door. The protection function has passed TUV certification and can ensure perfect quality. Excellent brake malfunction monitoring and feedback system can ensure reliable work of traction system.



## Energy feedback technology (option)

Energy feedback: green, environmental friendly, healthy

As the scale of city is larger and larger, more and more skyscrapers appear. While the elevator is bringing convenient and comfortable life, it also consumes massive energy. With the arrival of pro-environment trend, elevator energy feedback technology emerges at the moment which is regarded as the revolutionary energy-saving technology.

### Principle

Energy feedback unit converts DC voltage of DC link of inverter to AC voltage with same frequency and phase as grid voltage by automatically detecting DC bus voltage of inverter. Through multiple noise filters, it is connected to AC grid so as to achieve the purpose of energy feedback to grid. The electric energy fed back to grid reaches more than 97% of generated energy, saving the electricity energy effectively.

### Advantages of energy feedback

○ Energy saving, green, environmental protection.

Energy feedback system converts electric energy generated under generation operation state to clean and pollution-free electric energy to feed back the grid, which will save energy up to 30% compared with the elevator without the function of energy feedback.

○ Prolong service life of parts

Due to the cancellation of the elevator regenerative resistance, the temperature inside the machine room drops, prolonging the service life of equipment components.

○ Save the investment for the cooling device in machine room.

As the temperature of machine room drops, the cooling device capacity required will also fall sharply, saving investment of equipment and electric charge for the customers.

○ Renewable energy is filtered by high-performance EMI, avoiding the interference of other devices within the grid.

Renewable energy of renewable module filters harmonic interference off by the high-performance EMI filter.

○ Comprehensive energy feedback system

Module can achieve energy saving under condition of regenerating, and also act under the condition of motor energy consuming. It can greatly reduce the noise and vibration to improve comfort.

# MEET

## INDIVIDUALIZED NEED



### K162 (Standard)

Elegant and tasteful car design is perfectly combined with concise and smooth car ceiling creating a comfortable and quiet space.



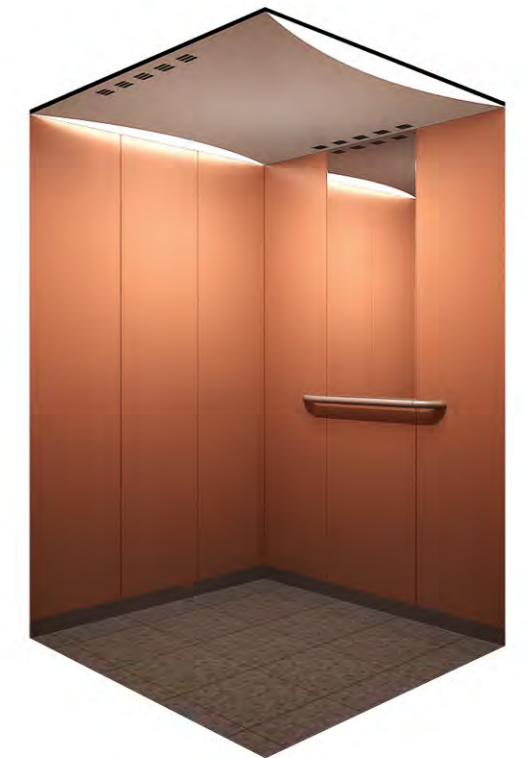
Car ceiling:	PS005 Painted steel sheet RAL1013, acrylic light cover
Car front wall:	Painted steel sheet RAL1013
Car side wall:	Painted steel sheet RAL1013
Door Transom:	Painted steel sheet RAL1013
Car door:	Painted steel sheet RAL1013
Floor:	Plastic floor, MA-018
COP:	C102Q SUS304 stainless fingerprint proof steel panel.

(computer drawing. May vary from the actual product)



### K163

Individualized car design and beautiful and tasteful inner decoration make passengers feel safe, comfortable and warm.



Car ceiling:	PS003 painted steel sheet RAL9003, acrylic light cover
Car front wall:	painted steel sheet RAL2003
Car side wall:	painted steel sheet RAL2003
Door Transom:	painted steel sheet RAL2003
Car door:	painted steel sheet RAL2003
Car rear wall:	painted steel sheet RAL2003 + Mirror finished stainless steel
Floor:	Plastic floor, MA-025
Handrail:	BLT-H112 painted RAL9003
COP:	C102Q SUS304 stainless fingerprint proof steel panel.

(computer drawing. May vary from the actual product)

# MEET

## INDIVIDUALIZED NEED



### K164

Exquisite car design is combined with the arc-shaped decoration ceiling design effectively increasing car height and making passengers feel more comfortable.



Car ceiling:	PS004 painted steel sheet RAL9003, down light.
Car front wall:	Hairline stainless steel
Car side wall:	painted steel sheet RAL1034
Car rear wall:	Hairline stainless steel + Mirror finished stainless steel
Door Transom:	Hairline stainless steel
Car door:	Hairline stainless steel
Floor:	Plastic floor, MA-025
COP:	C102Q SUS304 stainless fingerprint proof steel panel.
Handrail:	BLT-H112 painted RAL9003

(computer drawing. May vary from the actual product)



### K165

Exquisite car design is combined with the arc-shaped decoration ceiling design effectively increasing car height and making passengers feel more comfortable.



Car ceiling:	PD060 Hairline stainless steel, acrylic light cover, down light.
Car front wall:	Hairline stainless steel
Car 3-side wall:	Hairline stainless steel
Door Transom:	Hairline stainless steel
Car door:	Hairline stainless steel
Floor:	Plastic floor, SJ-008
COP:	C102Q SUS304 stainless fingerprint proof steel panel.

(computer drawing. May vary from the actual product)

# MEET

## INDIVIDUALIZED NEED



### K166

Car design is compact and novel. Hairline stainless steel decoration is applied to car which is economical, beautiful and easy for maintenance.



Car ceiling:	PD057
	Hairline stainless steel, acrylic light cover , down light.
Car front wall:	Hairline stainless steel
Car 3-side wall:	Hairline stainless steel
Door Transom:	Hairline stainless steel
Car door:	Hairline stainless steel
Floor:	Plastic floor, SJ-008
COP:	C102Q SUS304 stainless fingerprint proof steel panel.

(computer drawing. May vary from the actual product)



### K167

High quality hairline stainless steel, colorful steel sheet as well as elaborate car design ensure elevator quality.



Car ceiling:	PD060
	Hairline stainless steel, acrylic light cover , down light.
Car front wall:	Colorful steel sheet LC002
Car 3-side wall:	Colorful steel sheet LC002
Door Transom:	Colorful steel sheet LC002
Car door:	Colorful steel sheet LC002
Floor:	Plastic floor, MA-025
COP:	C102Q SUS304 stainless fingerprint proof steel panel.

(computer drawing. May vary from the actual product)



# MEET

## INDIVIDUALIZED NEED



**K168**

Car design has the features of practicality, beauty, elaboration and concision creating a more easeful experience for passengers.



Car ceiling:	PD060 Hairline stainless steel, acrylic light cover , down light.
Car front wall:	Colorful steel sheet LB002
Car 3-side wall:	Colorful steel sheet LB002
Door Transom:	Colorful steel sheet LB002
Car door:	Colorful steel sheet LB002
Floor:	Plastic floor, SJ-004
COP:	C102Q SUS304 stainless fingerprint proof steel panel.

(computer drawing. May vary from the actual product)



**K169**

Bright and spacious car cage and elegant ceiling design with a concise decoration style makes the car looks nice and decent.



Car ceiling:	PD057 Hairline stainless steel, acrylic light cover , down light.
Car front wall:	Colorful steel sheet LA001
Car 3-side wall:	Colorful steel sheet LA001
Door Transom:	Colorful steel sheet LA001
Car door:	Colorful steel sheet LA001
Floor:	Plastic floor, SJ-002A
COP:	C102Q SUS304 stainless fingerprint proof steel panel.

(computer drawing. May vary from the actual product)

## MEET INDIVIDUALIZED NEED



PS004 (only painted)



PS003 (only painted)



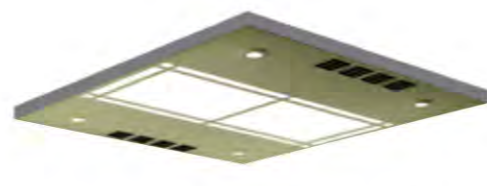
PD060



PD057



PS005  
(only painted RAL6019, 6027, 7004, 9003)



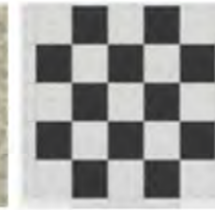
PS005 (only painted RAL1013)  
(Standard)

PS005	powder spray steel sheet RAL1013;standard
PS005	Powder spray steel sheet RAL6019; powder spray steel sheet RAL6027; powder spray steel sheet RAL7004; powder spray steel sheet RAL9003;
PS003	Powder spray steel sheet RAL1013; powder spray steel sheet RAL6019; powder spray steel sheet RAL6027; powder spray steel sheet RAL7004; powder spray steel sheet RAL9003;
PS004	Powder spray steel sheet RAL1013; powder spray steel sheet RAL6019; powder spray steel sheet RAL6027; powder spray steel sheet RAL7004; powder spray steel sheet RAL9003;
PD057	Hairline stainless steel; mirror stainless steel; etching stainless steel; Powder spray steel sheet RAL1013; powder spray steel sheet RAL6019; powder spray steel sheet RAL6027; powder spray steel sheet RAL7004; powder spray steel sheet RAL9003.
PD060	Hairline stainless steel; mirror stainless steel; etching stainless steel; powder spray steel sheet RAL1013; powder spray steel sheet RAL6019; powder spray steel sheet RAL6027; powder spray steel sheet RAL7004; powder spray steel sheet RAL9003;

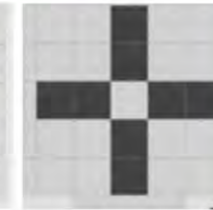
## CAR FLOOR



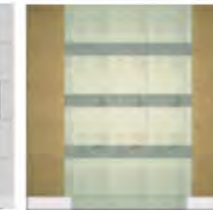
MA-025 Plastic floor (standard)



SJ-020 Plastic floor



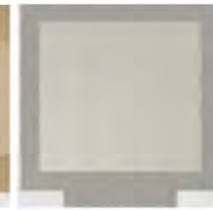
SJ-019 Plastic floor



SJ-002A Plastic floor



SJ-004 Plastic floor



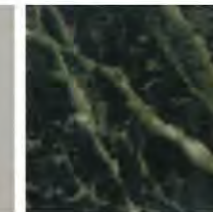
SJ-008 Plastic floor



MA-026 Plastic floor



MA-018 Plastic floor



MA-019 Plastic floor

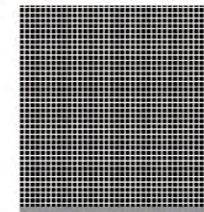


MA-021 Plastic floor

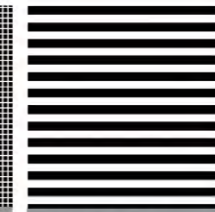


MA-023 Plastic floor

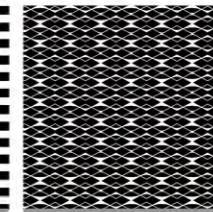
## MATERIAL



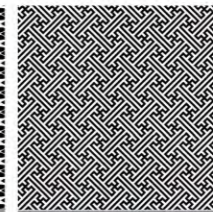
MJM-004 (etched)



MJM-005 (etched)



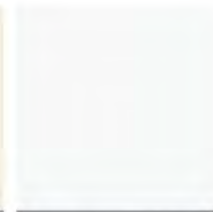
MJM-007(etched)



MJM-006 (etched)



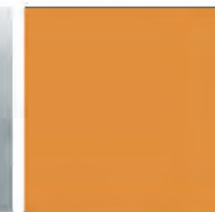
RAL1013 ( painted ) (standard)



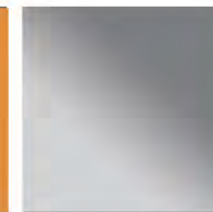
RAL9003(painted)



Hairline stainless steel



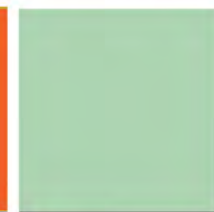
RAL1034(painted)



Mirror stainless steel



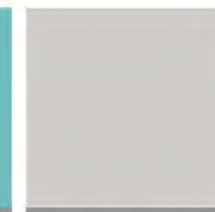
RAL2003(painted)



RAL6019 ( painted )



RAL6027 ( painted )



RAL7004 ( painted )



Colorful steel sheet LC002



Colorful steel sheet LB002

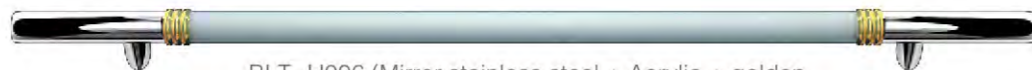


Colorful steel sheet LA001

## HANDRAIL



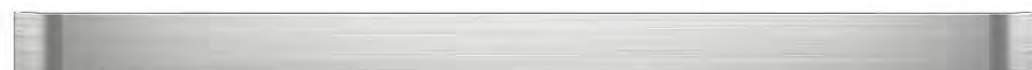
BLT-H005 (Mirror stainless steel)



BLT-H006 (Mirror stainless steel + Acrylic + golden titanium mirror stainless steel)



BLT-H007 (Mirror stainless steel)



BLT-H009 (Hairline stainless steel)



BLT-H012 (Mirror stainless steel + sand blasting stainless steel)



H011 (Stainless steel)



H112 (Painted RAL9003)

## COP & HALL CALL



C102Q	Aluminum alloy frame 304 stainless steel fingerprint-proof panel; round white light no Braille button; dynamic dot matrix display
C103Q	Aluminum alloy frame 304 stainless steel fingerprint-proof panel; square white light no Braille button; dynamic dot matrix display
C126Q	Aluminum alloy frame 304 stainless steel fingerprint-proof panel; round white light Braille button; dynamic dot matrix display
C127Q	Aluminum alloy frame 304 stainless steel fingerprint-proof panel; square white light Braille button; dynamic dot matrix display
C106Q	Aluminum alloy frame 304 stainless steel fingerprint-proof panel; round white light no Braille button; static segment code LCD (black text on white background)
C109Q	Aluminum alloy frame 304 stainless steel fingerprint-proof panel; square white light no Braille button; static segment code LCD (black text on white background)
C130Q	Aluminum alloy frame 304 stainless steel fingerprint-proof panel; round white light Braille button; static segment code LCD (black text on white background)
C133Q	Aluminum alloy frame 304 stainless steel fingerprint-proof panel; square white light Braille button; static segment code LCD (black text on white background)

(computer drawing. May vary from the actual product)

## COP & HALL CALL



C107Q	Aluminum alloy frame 304 stainless steel fingerprint-proof panel; round white light no Braille button; static segment code LCD (white text on blue background)
C110Q	Aluminum alloy frame 304 stainless steel fingerprint-proof panel; square white light no Braille button; static segment code LCD (white text on blue background)
C131Q	Aluminum alloy frame 304 stainless steel fingerprint-proof panel; round white light Braille button; static segment code LCD (white text on blue background)
C134Q	Aluminum alloy frame 304 stainless steel fingerprint-proof panel; square white light Braille button; static segment code LCD (white text on blue background)
C108Q	Aluminum alloy frame 304 stainless steel fingerprint-proof panel; round white light no Braille button; static segment code LCD (white text on black background)
C111Q	Aluminum alloy frame 304 stainless steel fingerprint-proof panel; square white light no Braille button; static segment code LCD (white text on black background)
C132Q	Aluminum alloy frame 304 stainless steel fingerprint-proof panel; round white light Braille button; static segment code LCD (white text on black background)
C135Q	Aluminum alloy frame 304 stainless steel fingerprint-proof panel; square white light Braille button; static segment code LCD (white text on black background)

(computer drawing. May vary from the actual product)

## COP & HALL CALL



C137Q	Aluminum alloy frame 304 stainless steel fingerprint-proof panel; round white light no Braille button; color LCD
C139Q	Aluminum alloy frame 304 stainless steel fingerprint-proof panel; square white light no Braille button; color LCD
C136Q	Aluminum alloy frame 304 stainless steel fingerprint-proof panel; round white light Braille button; color LCD
C138Q	Aluminum alloy frame 304 stainless steel fingerprint-proof panel; square white light Braille button; color LCD

(computer drawing. May vary from the actual product)

## COP & HALL CALL



H109A	304 hairline stainless steel panel; round white light no Braille button; dynamic dot matrix display
H109AB	304 hairline stainless steel panel; round white light no Braille button; dynamic dot matrix display, duplex
H110A	304 hairline stainless steel panel; square white light no Braille button; dynamic dot matrix display
H110AB	304 hairline stainless steel panel; square white light no Braille button; dynamic dot matrix display, duplex
H165A	304 hairline stainless steel panel; round white light Braille button; dynamic dot matrix display
H165AB	304 hairline stainless steel panel; round white light Braille button; dynamic dot matrix display, duplex
H166A	304 hairline stainless steel panel; square white light Braille button; dynamic dot matrix display
H166AB	304 hairline stainless steel panel; square white light Braille button; dynamic dot matrix display, duplex



H112A	304 hairline stainless steel panel; round white light no Braille button; static segment code LCD (black text on white background)
H112AB	304 hairline stainless steel panel; round white light no Braille button; static segment code LCD (black text on white background), duplex
H115A	304 hairline stainless steel panel; square white light no Braille button; static segment code LCD (black text on white background)
H115AB	304 hairline stainless steel panel; square white light no Braille button; static segment code LCD (black text on white background), duplex
H169A	304 hairline stainless steel panel; round white light Braille button; static segment code LCD (black text on white background)
H169AB	304 hairline stainless steel panel; round white light Braille button; static segment code LCD (black text on white background), duplex
H172A	304 hairline stainless steel panel; square white light Braille button; static segment code LCD (black text on white background)
H172AB	304 hairline stainless steel panel; square white light Braille button; static segment code LCD (black text on white background), duplex



H113A	304 hairline stainless steel panel; round white light no Braille button; static segment code LCD (white text on blue background)
H113AB	304 hairline stainless steel panel; round white light no Braille button; static segment code LCD (white text on blue background), duplex
H116A	304 hairline stainless steel panel; square white light no Braille button; static segment code LCD (white text on blue background)
H116AB	304 hairline stainless steel panel; square white light no Braille button; static segment code LCD (white text on blue background), duplex
H170A	304 hairline stainless steel panel; round white light Braille button; static segment code LCD (white text on blue background)
H170AB	304 hairline stainless steel panel; round white light Braille button; static segment code LCD (white text on blue background), duplex
H173A	304 hairline stainless steel panel; square white light Braille button; static segment code LCD (white text on blue background)
H173AB	304 hairline stainless steel panel; square white light Braille button; static segment code LCD (white text on blue background), duplex



H114A	304 hairline stainless steel panel; round white light no Braille button; static segment code LCD (white text on black background)
H114AB	304 hairline stainless steel panel; round white light no Braille button; static segment code LCD (white text on black background), duplex
H117A	304 hairline stainless steel panel; square white light no Braille button; static segment code LCD (white text on black background)
H117AB	304 hairline stainless steel panel; square white light no Braille button; static segment code LCD (white text on black background), duplex
H171A	304 hairline stainless steel panel; round white light Braille button; static segment code LCD (white text on black background)
H171AB	304 hairline stainless steel panel; round white light Braille button; static segment code LCD (white text on black background), duplex
H174A	304 hairline stainless steel panel; square white light Braille button; static segment code LCD (white text on black background)
H174AB	304 hairline stainless steel panel; square white light Braille button; static segment code LCD (white text on black background), duplex

(computer drawing. May vary from the actual product)

## COP & HALL CALL



H118A	Aluminum alloy frame 304 stainless steel fingerprint-proof panel; round white light no Braille button; static segment code LCD (black text on white background)
H118AB	Aluminum alloy frame 304 stainless steel fingerprint-proof panel; round white light no Braille button; static segment code LCD (black text on white background), duplex
H121A	Aluminum alloy frame 304 stainless steel fingerprint-proof panel; square white light no Braille button; static segment code LCD (black text on white background)
H121AB	Aluminum alloy frame 304 stainless steel fingerprint-proof panel; square white light no Braille button; static segment code LCD (black text on white background), duplex
H175A	Aluminum alloy frame 304 stainless steel fingerprint-proof panel; round white light Braille button; static segment code LCD (black text on white background)
H175AB	Aluminum alloy frame 304 stainless steel fingerprint-proof panel; round white light Braille button; static segment code LCD (black text on white background), duplex
H178A	Aluminum alloy frame 304 stainless steel fingerprint-proof panel; square white light Braille button; static segment code LCD (black text on white background)
H178AB	Aluminum alloy frame 304 stainless steel fingerprint-proof panel; square white light Braille button; static segment code LCD (black text on white background), duplex



H119A	Aluminum alloy frame 304 stainless steel fingerprint-proof panel; round white light no Braille button; static segment code LCD (white text on blue background)
H119AB	Aluminum alloy frame 304 stainless steel fingerprint-proof panel; round white light no Braille button; static segment code LCD (white text on blue background), duplex
H122A	Aluminum alloy frame 304 stainless steel fingerprint-proof panel; square white light no Braille button; static segment code LCD (white text on blue background)
H122AB	Aluminum alloy frame 304 stainless steel fingerprint-proof panel; square white light no Braille button; static segment code LCD (white text on blue background), duplex
H176A	Aluminum alloy frame 304 stainless steel fingerprint-proof panel; round white light Braille button; static segment code LCD (white text on blue background)
H176AB	Aluminum alloy frame 304 stainless steel fingerprint-proof panel; round white light Braille button; static segment code LCD (white text on blue background), duplex
H179A	Aluminum alloy frame 304 stainless steel fingerprint-proof panel; square white light Braille button; static segment code LCD (white text on blue background)
H179AB	Aluminum alloy frame 304 stainless steel fingerprint-proof panel; square white light Braille button; static segment code LCD (white text on blue background), duplex

(computer drawing. May vary from the actual product)



H120A	Aluminum alloy frame 304 stainless steel fingerprint-proof panel; round white light no Braille button; static segment code LCD (white text on black background)
H120AB	Aluminum alloy frame 304 stainless steel fingerprint-proof panel; round white light no Braille button; static segment code LCD (white text on black background), duplex
H123A	Aluminum alloy frame 304 stainless steel fingerprint-proof panel; square white light no Braille button; static segment code LCD (white text on black background)
H123AB	Aluminum alloy frame 304 stainless steel fingerprint-proof panel; square white light no Braille button; static segment code LCD (white text on black background), duplex
H177A	Aluminum alloy frame 304 stainless steel fingerprint-proof panel; round white light Braille button; static segment code LCD (white text on black background)
H177AB	Aluminum alloy frame 304 stainless steel fingerprint-proof panel; round white light Braille button; static segment code LCD (white text on black background), duplex
H180A	Aluminum alloy frame 304 stainless steel fingerprint-proof panel; square white light Braille button; static segment code LCD (white text on black background)
H180AB	Aluminum alloy frame 304 stainless steel fingerprint-proof panel; square white light Braille button; static segment code LCD (white text on black background), duplex



H182A	304 hairline stainless steel panel; round white light no Braille button; color LCD
H182AB	304 hairline stainless steel panel; round white light no Braille button; color LCD, duplex
H184A	304 hairline stainless steel panel; square white light no Braille button; color LCD
H184AB	304 hairline stainless steel panel; square white light no Braille button; color LCD, duplex
H181A	304 hairline stainless steel panel; round white light Braille button; color LCD
H181AB	304 hairline stainless steel panel; round white light Braille button; color LCD, duplex
H183A	304 hairline stainless steel panel; square white light Braille button; color LCD
H183AB	304 hairline stainless steel panel; square white light Braille button; color LCD, duplex

(computer drawing. May vary from the actual product)

## COP & HALL CALL



H124C	Circular arc ultra thin wall-mounted no display, 304 hairline stainless steel panel; round white light no Braille button
H126C	Circular arc ultra thin wall-mounted no display, 304 hairline stainless steel panel; square white light no Braille button
HB333	Circular arc ultra thin wall-mounted no display, 304 hairline stainless steel panel; round white light Braille button
HB334	Circular arc ultra thin wall-mounted no display, 304 hairline stainless steel panel; square white light Braille button



H125C	Aluminum alloy frame 304 stainless steel fingerprint-proof panel; no display, round white light no Braille button
H127C	Aluminum alloy frame 304 stainless steel fingerprint-proof panel; no display, square white light no Braille button
HB330	Aluminum alloy frame 304 stainless steel fingerprint-proof panel; no display, round white light Braille button
HB331	Aluminum alloy frame 304 stainless steel fingerprint-proof panel; no display, square white light Braille button

(computer drawing. May vary from the actual product)

## COP & HALL CALL



H185A	Aluminum alloy frame 304 stainless steel fingerprint-proof panel; round white light no Braille button; dynamic dot matrix display
H185AB	Aluminum alloy frame 304 stainless steel fingerprint-proof panel; round white light no Braille button; dynamic dot matrix display, duplex
H187A	Aluminum alloy frame 304 stainless steel fingerprint-proof panel; square white light no Braille button; dynamic dot matrix display
H187AB	Aluminum alloy frame 304 stainless steel fingerprint-proof panel; square white light no Braille button; dynamic dot matrix display, duplex
H186A	Aluminum alloy frame 304 stainless steel fingerprint-proof panel; round white light Braille button; dynamic dot matrix display
H186AB	Aluminum alloy frame 304 stainless steel fingerprint-proof panel; round white light Braille button; dynamic dot matrix display, duplex
H188A	Aluminum alloy frame 304 stainless steel fingerprint-proof panel; square white light Braille button; dynamic dot matrix display
H188AB	Aluminum alloy frame 304 stainless steel fingerprint-proof panel; square white light Braille button; dynamic dot matrix display, duplex

(computer drawing. May vary from the actual product)

## COP & HALL CALL



HF300



HF330



H111G



H130G



H137G

HF300	Hairline stainless steel panel; circular arc panel upper and lower ends
HF330	Aluminum alloy frame 304 stainless steel fingerprint-proof panel
H111G	Hairline stainless steel panel; dot matrix display
H137G	Hairline stainless steel panel; 6.4-inch segment code LCD
H130G	Hairline stainless steel panel; color LCD



C155G  
304 hairline stainless steel panel; wall-mounted structure; round white light stainless steel sand blasting contact face Braille button

## HALL LANTERNS



HD017

Hairline stainless steel panel;  
Translucent acrylic, Round amber light



HD018

Hairline stainless steel panel; Translucent acrylic,  
Triangular amber light



HD019

Hairline stainless steel panel;  
Translucent acrylic, square amber light



HD010



HD011



HD012



HD013



HD014



HD015



HD016



## COP & HALL CALL



Standard: Painted Steel Narrow Door Jamb



Option: Hairline Stainless Steel Wide Door Jamb  
“Only For Normal Door,Not for fire-proof Door”



Option: Hairline Stainless Steel Large Door Jamb  
“Only For Normal Door,Not for fire-proof Door”

## STANDARD FUNCTION

### 1 Full collective selective control

In the state of automatic operation the elevator automatically responds to car and hall calls signals. Passengers on every floor can register up and down call signals to call the elevator.

### 2 Door open time setting

According to set time, the system can distinguish holding time for door open of hall call, car call, door protection and delay.

### 3 Service floor setting

The system can choose to close or activate single or multiple elevator service floors as needed.

### 4 Timing service

The system can flexibly set the time and floors for service.

### 5 Door pre-close by the door close button

During door open holding in automatic running state, passengers can press the door close button to close the door in advance, which improves the efficiency.

### 6 Light curtain protection

When the light curtain is blocked during door closing, the door will open again. But light curtain protection doesn't work in the state of firefighting.

### 7 Automatic car light and ventilation fan shut off

If no call or call registration is registered after set time, car light and fan are automatically shut off. If a call is received, light and fan are switched on again.

### 8 Automatic door open upon door lock abnormality

If the system detects that the door lock circuit is abnormal during door open/close, the elevator automatically opens and closes the door again, and reports a fault after the set door open/close times is reached.

### 9 Landing at another floor

If door open limit signal is still invalid after door open time exceeds protection time, elevator will automatically run to the nearest floor.

### 10 Response and landing during acceleration

For calls during the acceleration, elevator will respond to the calls and land.

### 11 Cancellation of wrong car calls

Passengers can press the button consecutively twice to cancel wrong car calls.

### 12 Attendant running

In attendant state, the running of the elevators is controlled by the attendant.

### 13 Self-rescue at low speed

When elevator is under normal service and doesn't stop at the leveling zone, elevator will move to the leveling zone with slow speed as long as it meets the safety requirements of starting.

### 14 Button stuck diagnosis

The control system can automatically identify whether a hall call button is stuck and cancel the stuck call, preventing the condition that the elevator cannot close the door.

### 15 Startup torque automatic compensation

The system automatically implements startup torque compensation based on the current car load, achieving smooth startup and the riding comfort.

### 16 Direct landing

The control system automatically calculates to generate running curve and directly land at leveling position without creeping.

### 17 The best curve automatic generation

The control system automatically generates speed curve which is most suitable for human-machine function principle.

### 18 Record of running times

Elevator can record the running times automatically.

### 19 Record of running time

Elevator can record the actual running time automatically.

### 20 Independent travel

All hall call signals are cancelled, elevators only respond to the car call signals.

### 21 Overload indication

When the load in car is more than related load, the elevator door will keep opening and there will be overload indication in the car.

### 22 Full load indication

Landing indicator shows the elevator is in the state of full load.

## STANDARD FUNCTION

### 23 Full load bypass

In the state of full load the elevator only responds to car call signals.

### 24 Electronic weighing

An electronic weighing device measures car load accurately.

### 25 Non-leveling zone protection

If the control system detects landing door or car door has been opened while the elevator is in the non-leveling zone, the car operation will be stopped.

### 26 Fault data record

The control system can record the detailed fault information automatically to improve the efficiency of maintenance.

### 27 Simple maintenance keypad

The keypad provides the functions, such as commissioning the running floors, door opening, closing and etc.

### 28 Commissioning in car

The hand operation panel can be connected to the system in the car for elevator commissioning, which improves commissioning efficiency.

### 29 Hoistway self-learning function

The elevator runs to the highest floor from the lowest floor at inspection speed and save all of the parameters automatically in the operational process.

### 30 Inspection running

During inspection, the control system will cancel automatic operation of elevator and door. Pushing up (or down) button can make the elevator inch at inspection speed.

### 31 Motor parameters tuning

By parameters setting, the system can complete learning of the related control parameters of motor with or without load.

### 32 Floor position intelligent correction

When elevator arrives at terminal floor, the system will automatically check and correct car position information and completely eliminate faults for over travel top terminal or bottom terminal.

### 33 Fire emergency travel

Elevator will cancel registered calls, return to firefighting main floor and keep doors open after receiving fire signal.

### 34 Fire emergency travel indication

During fire emergency travel landing operation indicator displays fire emergency travel.

### 35 Fireman service operation

Under the mode of fireman service operation the elevator only can open or close the door by constantly pushing open or close buttons. At this time the elevator only responds to car calls (Only one car call can be registered every time.)

The longest traveling time shall be less than 60s (standard function)

### 36 Firefighting "No entry" indication

In case of fire and elevator on the firefighting floor, the "No entry" light on the fire box will be lit.

### 37 Firefighting feedback

When elevator receives the fire alarm signal or fireman service signal, it will return to the firefighting floor to provide relay output interface for fire-service center or BAS system.

### 38 Parking switch

In the state of automatic operation, if elevator parking switch is actuated, the elevator will return to main floor and stop automatic running.

### 39 Troubleshooting based on fault levels

Faults are classified into different levels based on the severity. Different levels of faults are rectified by using different methods to improve efficiency.

### 40 Overspeed stop running

If the elevator speed exceeds the limit, the elevator immediately stops running.

### 41 Terminal floor data correction

If the system detects the abnormal location, the elevator will travel to the terminal level for inspection in order to secure the safety and reliability of the system.

## STANDARD FUNCTION

### 42 Passenger rescue first

Elevator classifies the fault levels automatically, and it will return to leveling position to let passengers get out under the condition of safe running.

### 43 Light load anti- nuisance function

The number of car calls registered at the same time is limited under light load.

### 44 Intercom

A five-way intercom linking car top, the car, the pit, the machine room, and the monitoring room is provided.

### 45 Alarm bell

When the alarm bell button is pushed, the alarm bell will ring.

### 46 Parameter copying

Uploading and downloading parameters to control system by hand-held operator.

### 47 Parameter inspection

Use this function to find out the parameters set by system which are not insistent with original parameters.

### 48 Special display

The system is able to set the display if non-sequenced floor display in car and hall is requested by the customer.

### 49 Running direction and floor display

The floor number on which the elevator is and current running direction is displayed on car operation panel and landing call box.

### 50 Door open with floor button

Before elevator starts, push the button on this floor, the car door will be opened automatically.

### 51 Reverse hall call registration

The call will be registered if the call direction of this floor is not in the travel direction.

### 52 Anti-slip protection

The elevator will stop running when steel wire rope slipping is detected.

### 53 Power failure data holding

All running data will be saved completely and correctly when the power supply is cut off.

### 54 Automatic main floor returning

Under automatic travel, the elevator will return to the main floor waiting if there is no car call or hall call for a period of time. The elevator will respond to any call immediately during the process of returning to the main floor.

### 55 Emergency car lighting

Emergency lighting in car will turn on automatically during power failure.

### 56 Landing display of out-of-service

Landing indicator shows the out-of-service state of elevator.

### 57 Door interlock short-circuit protection

Elevator would stop and send out alarm message when short circuit of door interlock is detected. The elevator will not operate until the fault is eliminated.

### 58 Brake monitoring function

The system automatically monitors the working condition of the brake to ensure the reliable operation of the brake.

### 59 Motor overheat protection

The system monitors whether the motor is overheated, the elevator will stop until the motor recovers to normal condition.

## OPTIONAL FUNCTION

### 1 Duplex running

The duplex control aims at fulfilling two lifts' coordinated responding to the landing call through the data transmission from serial communication bus so that it can enhance the lift running efficiency.

### 2 Group control running

The group control means the concentrated control of the multiple elevators. The system can have a group control of maximum 8 elevators. In using the group control system, the elevator group can automatically choose the most appropriate response so as to avoid the repeated elevator stop, reduce the passengers' waiting period and increase the running efficiency, save the electric energy.

### 3 Distribution waiting

It is optional in duplex or group control.

### 4 Peak service

It is optional in duplex or group control.

### 5 Door safety edge protection

When the door safety edge is touched, the door will open again.

### 6 Integrated light curtain and door safety edge

Integrated light curtain provides dual protection of light curtain and safety edge.

### 7 Door nudging

When door nudging function is started, the elevator will enter door nudging state and slowly close the door with buzzing in the event the elevator cannot close door in excess of set time due to light curtain action. The function is optional when the elevator has integrated light curtain or safety edge.

### 8 Car arrival gong

After elevator arrives at destination landing according to passengers' requirements, there will be prompting signal from car top board. The function is included when there are functions of voice announcement or background music.

### 9 Arrival gong cancellation at night

Within the set time period, the arrival can be cancelled. The function is optional when there is car arrival gong.

### 10 Earthquake emergency travel

When the seismic sensors are actuated, all elevators will stop promptly at the nearest available floor and park there with doors open.

### 11 ARD(automatic rescue device)

If the elevator suddenly stops the running in the mid way due to power failure, this device will actuate rapidly to slowly drive lift to the leveling position. After the leveling, it opens the door to rescue the passengers.

### 12 Standby power transfer device

A standby power transfer device is provided. (Three-phase 380V automatic transfer device can be provided by us, and automatic transfer device of other voltage classes are provided by customers.)

### 13 Standby power transfer device interface

Standby power transfer device interface is provided.

### 14 Voice announcement function

Such information as running direction and arrival floors are automatically announced to passengers in the process of running.

### 15 Background music function

Melodious background music is provided in car when elevator is put into operation.

### 16 Pre-opening

When the elevator normally decelerates to the destination landing door zone, if it satisfies the function of opening the door ahead of time, it will do so.

### 17 Releveling

After the elevator parks at the current floor, as too much passengers enter into or leave the elevator, it results in the expansion or shrink of the steel rope, the car will be separated from the leveling zone. Under the door open conditions, the lift will start the low speed running to the leveling point.

### 18 Hall lantern

When the elevator arrives at destination floor, hall lantern will be lit.

### 19 Security floor

After the security floor function is enabled, the security floor is used at 10:00 p.m. to 6:00 a.m., and the elevator runs to the security floor first every time, stops and opens the door, and then runs to the destination floor.

### 20 Car camera interface reserved

Coaxial communication cable is included in traveling cable. The function is included when there is car camera device.

### 21 Car camera device

Cameras are installed in car to monitor situation in car.

### 22 Automatic lock elevator

Make elevator enter into and exit the state of lock elevator automatically by setting automatic lock elevator period in control system.

### 23 Auxiliary car operation panel

This panel can be conveniently used for passengers in large-capacity elevators.

### 24 Operation panel for the disabled

The operation panel is designed for the disabled and has such functions as door open and close, floor selection and sending out rescue signals under special circumstance.

### 25 Through opening door function

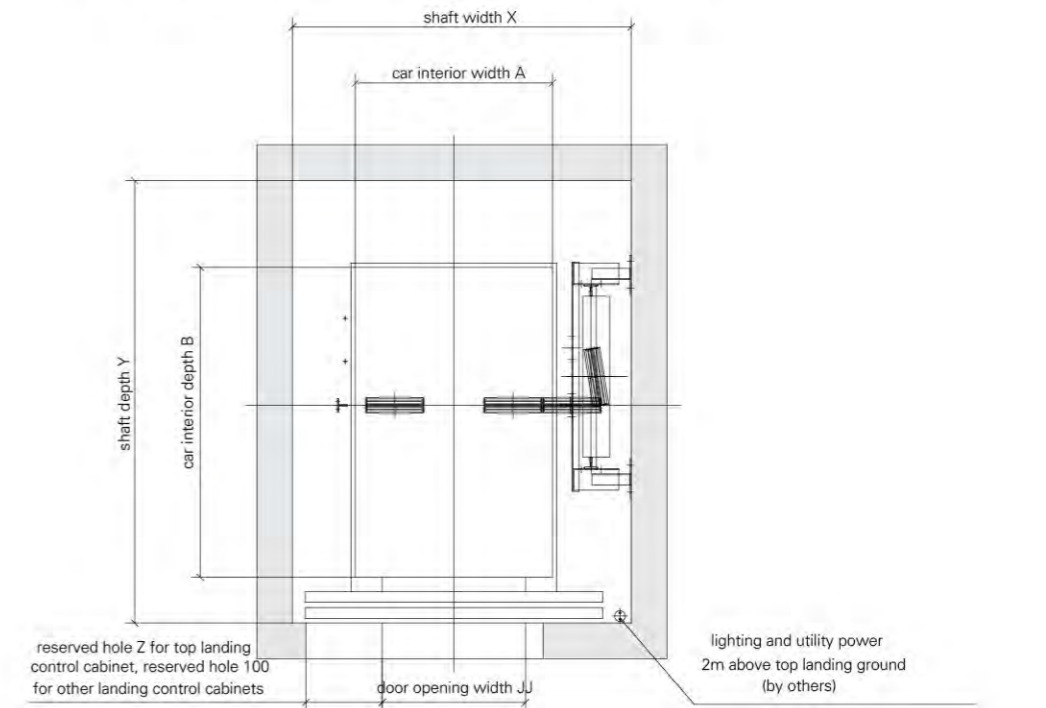
When there are two doors for a car, automatic control on the two doors depends on your requirements.

### 26 IC card

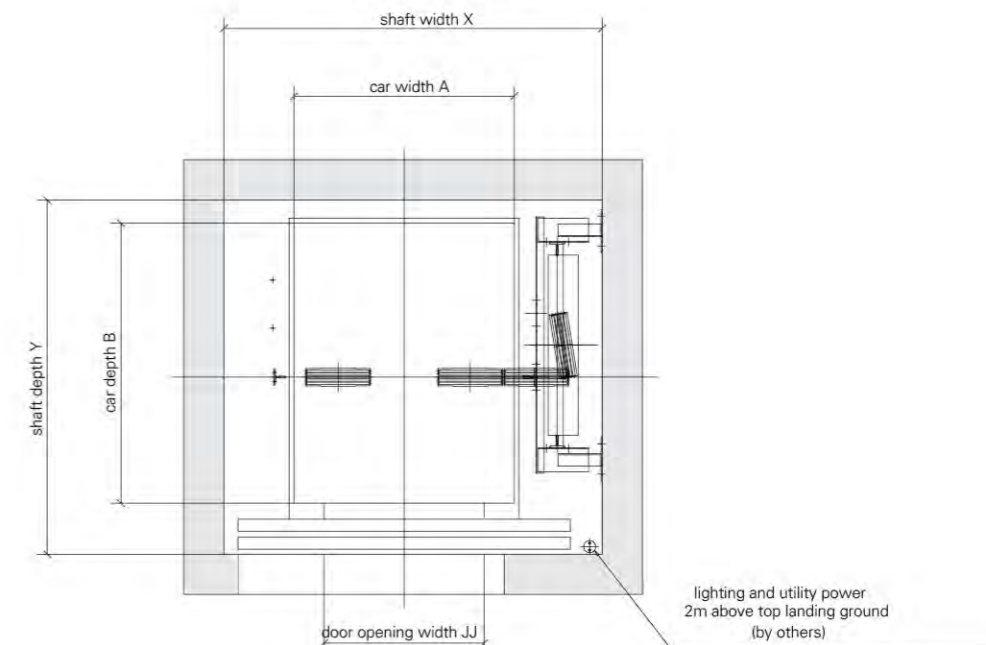
Passengers need to use the IC card to go to floors that require authorization.

## PLANFORM OF HOISTWAY/MACHINE ROOM

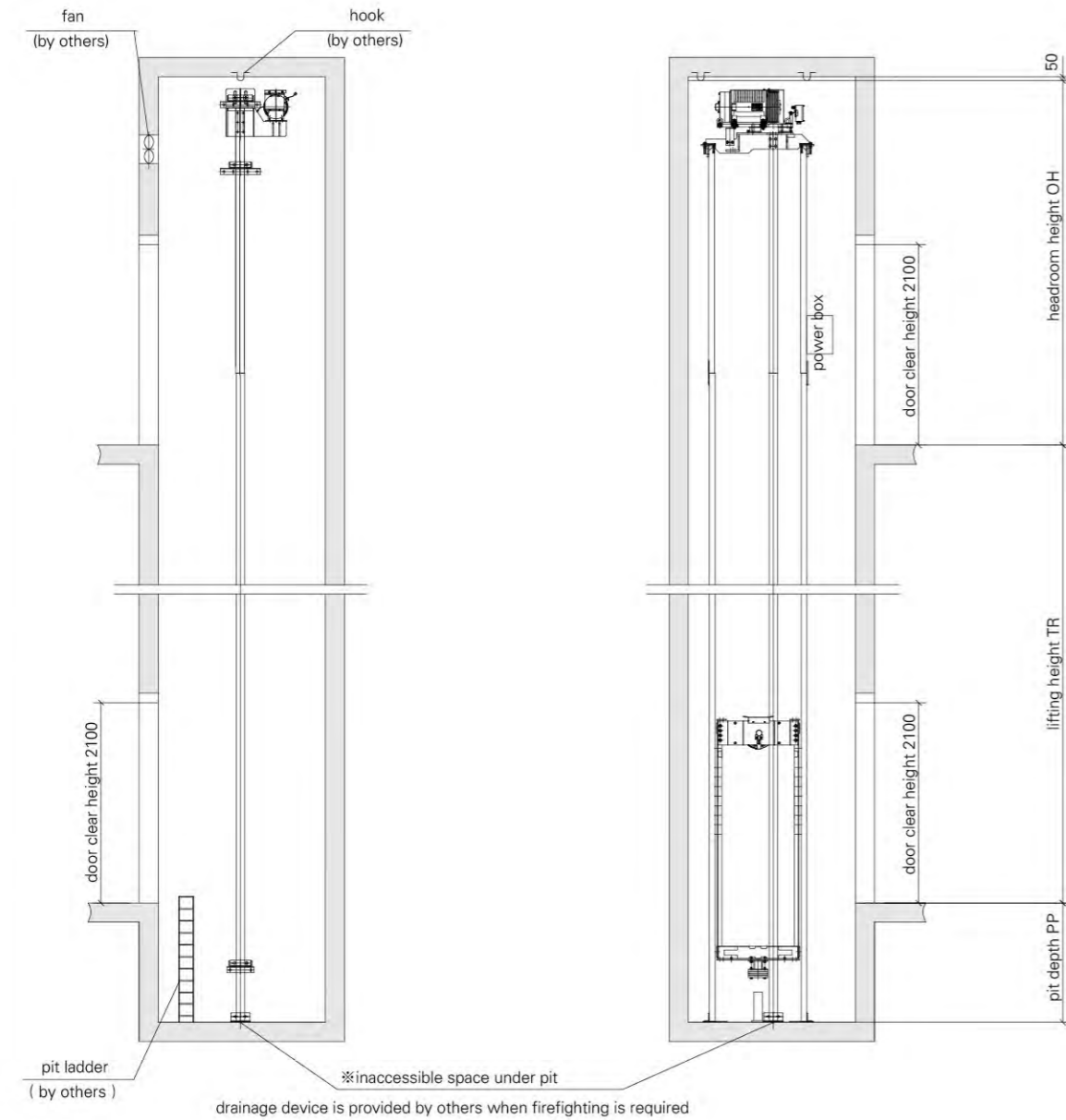
loading capacity 1000kg(car dimension is 1100×2100, center opening stretcher elevator)



loading capacity 630~1000kg



## PLANFORM OF HOISTWAY/MACHINE ROOM



## PLANFORM OF HOISTWAY/MACHINE ROOM

Rated load (Kg)	Rated speed (m/s)	Opening dimension (mm) (JJ × DH)	Car dimension (mm) (A × B × H)	Hoistway dimension (mm) (X × Y)
630	1.0 1.6 1.75 2.0	CO 800 × 2100	1100 × 1400 × CH	1835 × 1750
800		CO 800 × 2100	1350 × 1400 × CH	1960 × 1750
1000		CO 900 × 2100	1600 × 1400 × CH	2185 × 1750
1000		CO 900 × 2100	1100 × 2100 × CH	2000 × 2450

Note: CH, car net height, has two specifications of 2300 and 2450.  
630kg without 2m/s

Rated speed (m/s)	Top terminal landing height OH(mm) (when car net height is 2300)	Top terminal landing height OH(mm) (when car net height is 2450)	Pit depth PP(mm)
1.0	3950	4100	1200
1.6	4100	4250	1300
1.75	4150	4300	1350
2.0	4300	4450	1550